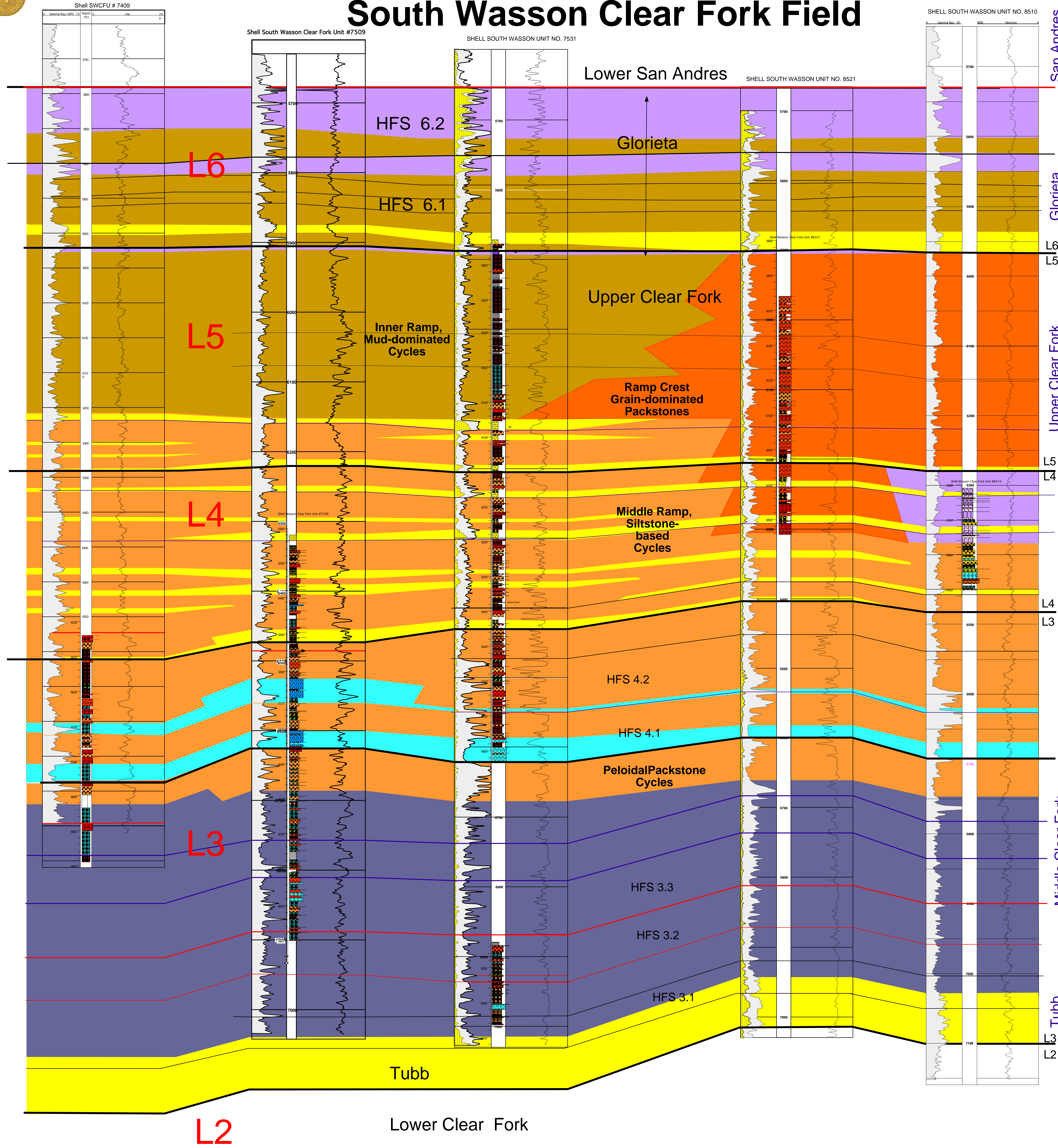
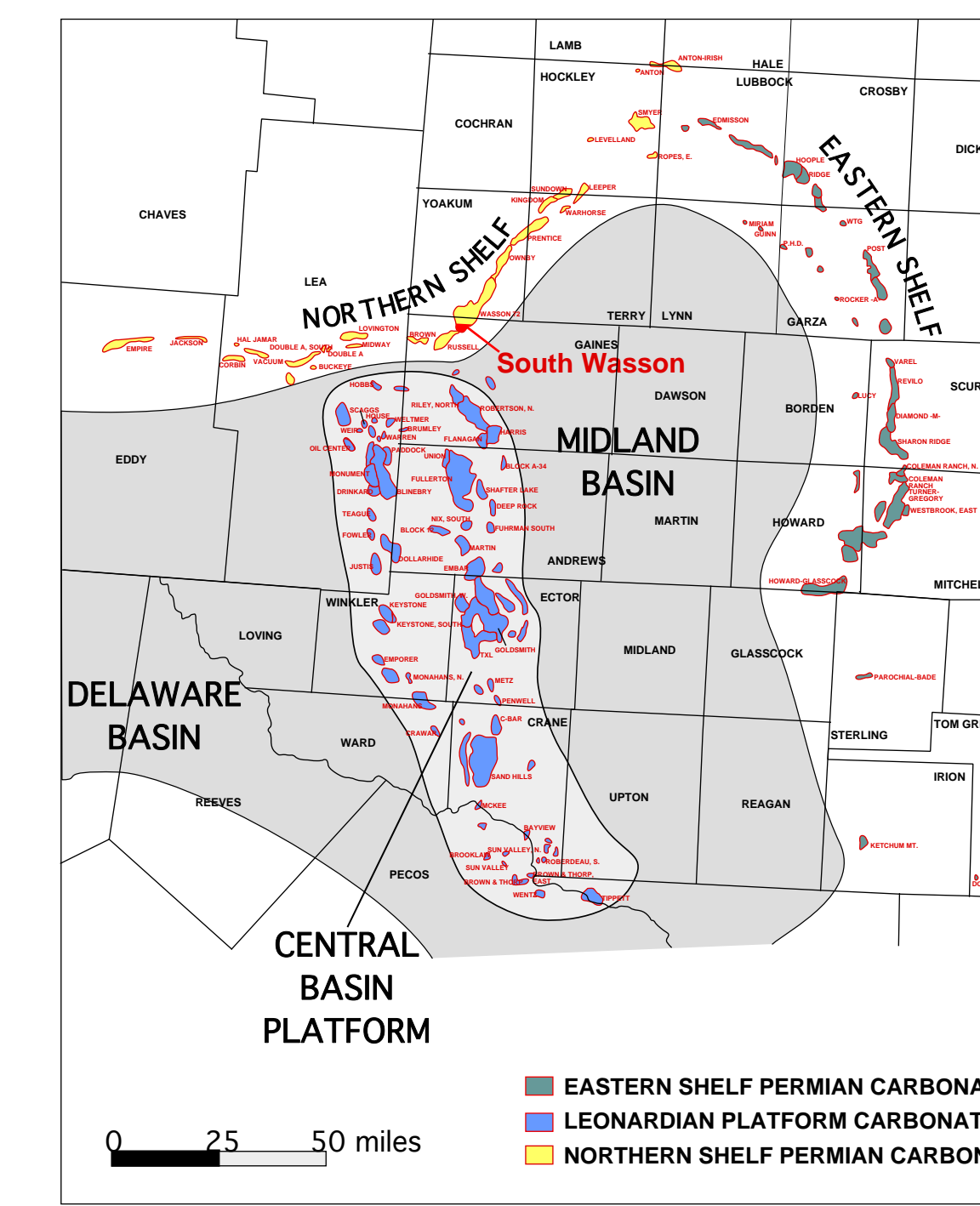


# RESERVOIR CROSS SECTION

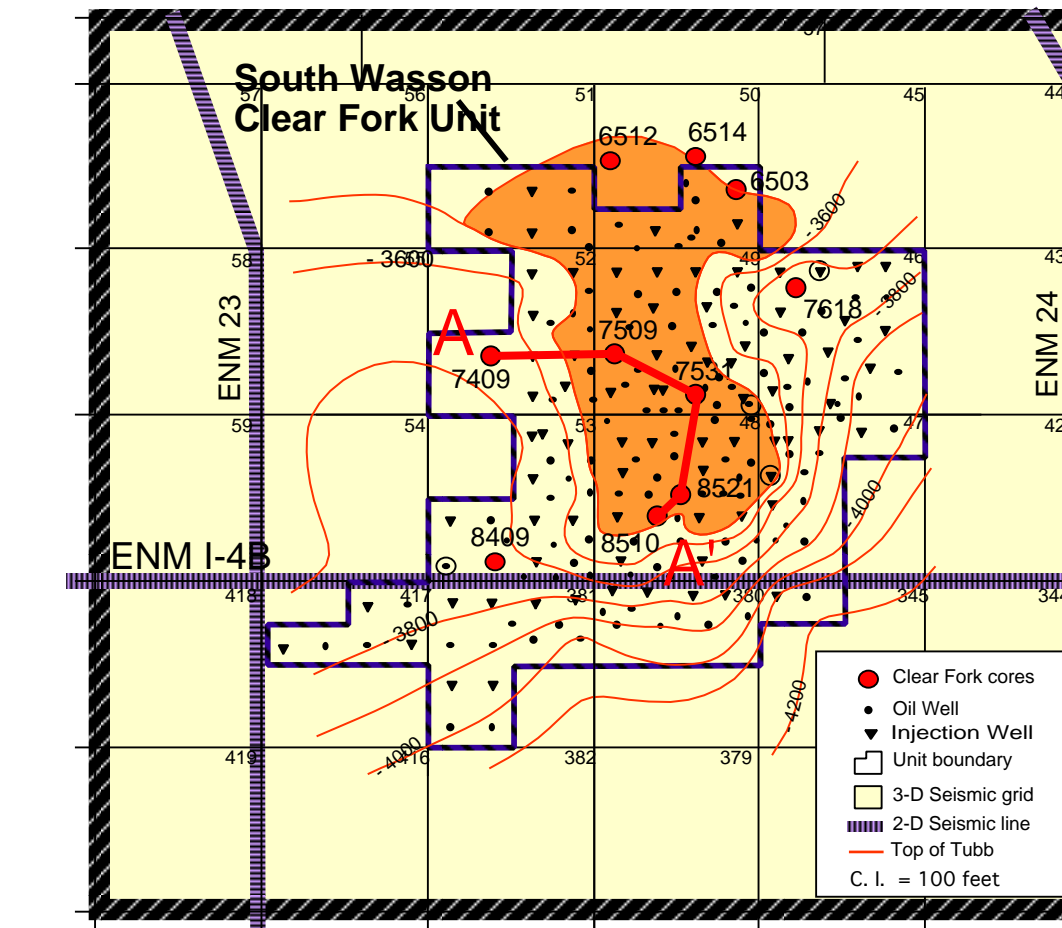
## South Wasson Clear Fork Field



LEONARDIAN CARBONATE OIL RESERVOIRS



SOUTH WASSON CLEAR FORK UNIT  
GAINES COUNTY, TEXAS  
Tubb Structure



**EXPLANATION**

- Ramp crest: peloid/oid packstone-grain-dominated packstone
- Inner ramp: peloid wackestone - mudstone
- Tidal flat: fenestral-pisolitic mudstone-packstone
- Transgressive outer ramp: skeletal wackestone -packstone & skeletal buildups
- Transgressive siltstone
- Middle ramp: peloidal packstone-caaped cycles
- Skeletal/peloidal mud-dominated packstone-wackestone
- Sequence (composite sequence) boundary
- High frequency sequence boundary
- Composite cycle boundary
- Correlation marker

